



Tiesīcību ministrija

Project No.JUST/2010/KPEN/AG/1546 “Possibilities of solution of topical problems of restorative justice in the European Union”

Conference „Commensurability of human rights and conception of coercive preventive measures”

March 27 2013,Riga

Crime prevention system in Latvia



Overall prevention.

Prevention regulation in policy documents and legal acts (mostly carried out by State police and municipal police)

Individual prevention, carried out by municipal Social services and other institutions in places of residence

Nature of coercive preventive measures (CPM)

Namely:



CPM is not a punishment, rather a state's response for preventing threats to rights and interests protected by law

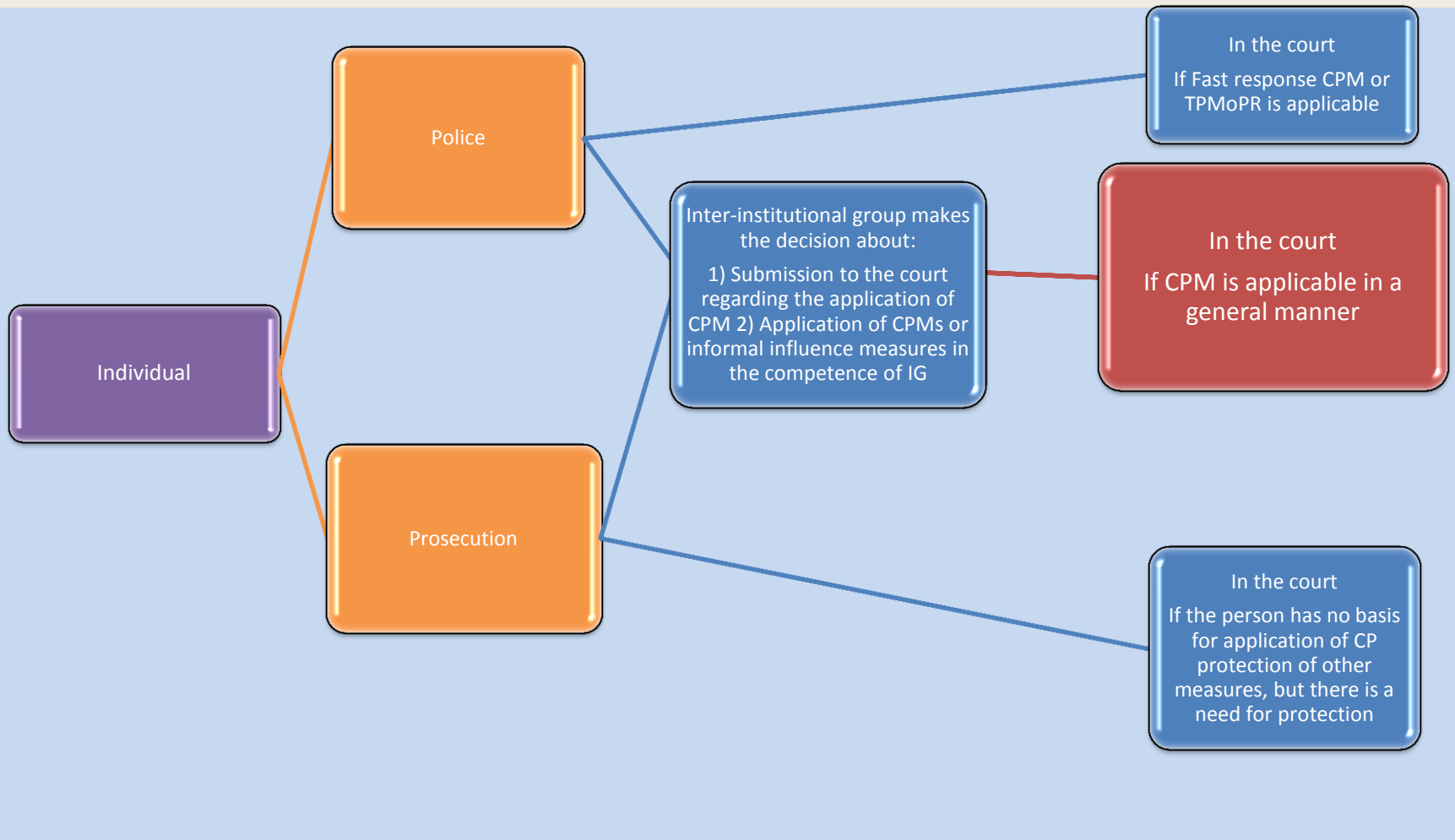


CPM is applied as state's regulatory response to person's behaviour in order to protect endangered lawful rights and interests of a society or individual and to prevent the damage.



CPM does not punish, but rather makes the person to fulfil his/her obligations that he/she is not fulfilling

Special status of State police and prosecution in the application of CPM

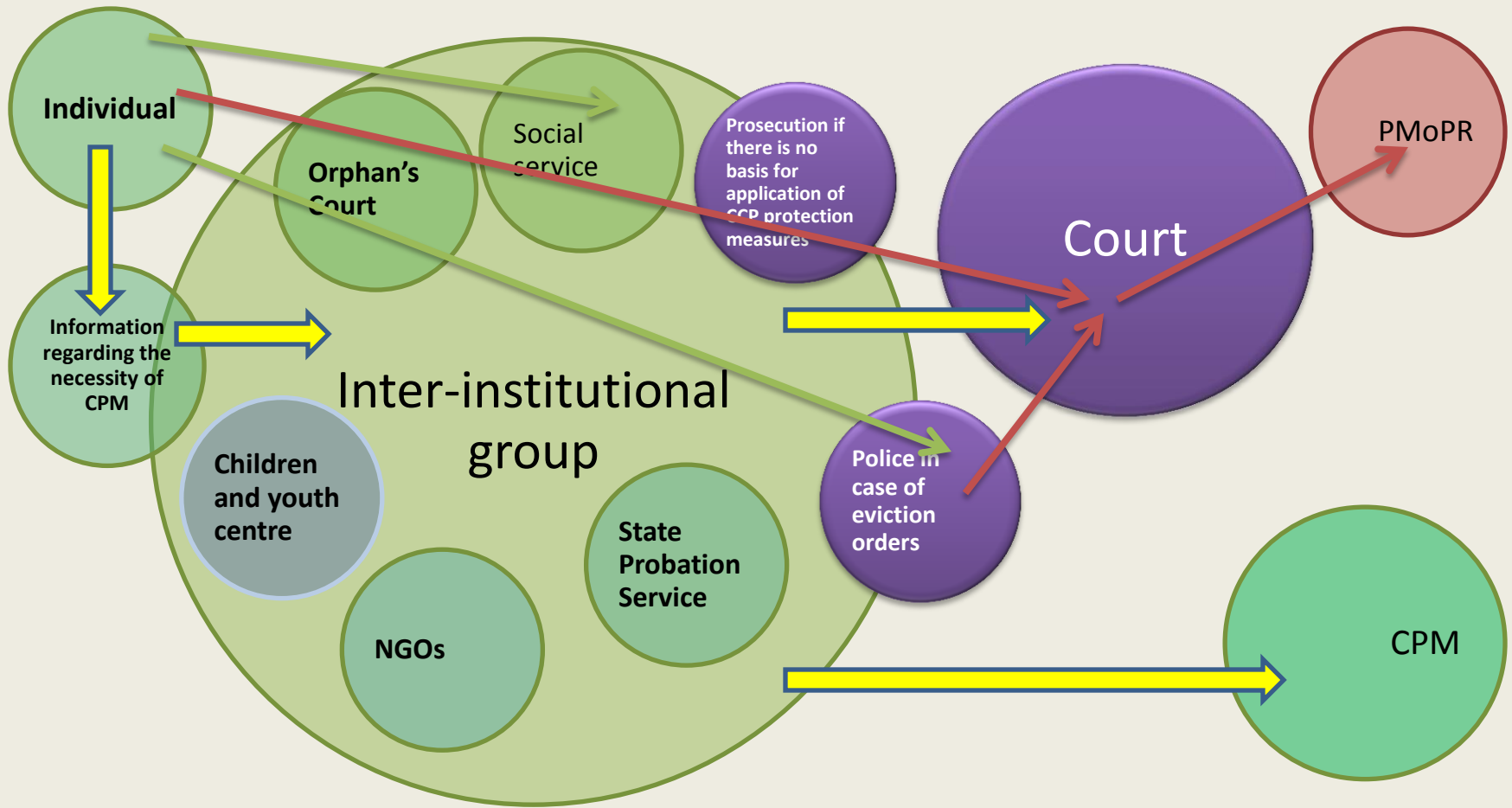


Order in which the information from an individual reaches the Inter-institutional work group from IG members and after that the court – is shown with yellow arrows

Order in which the information reaches the State police and prosecution, and after that the court – shown with green arrows

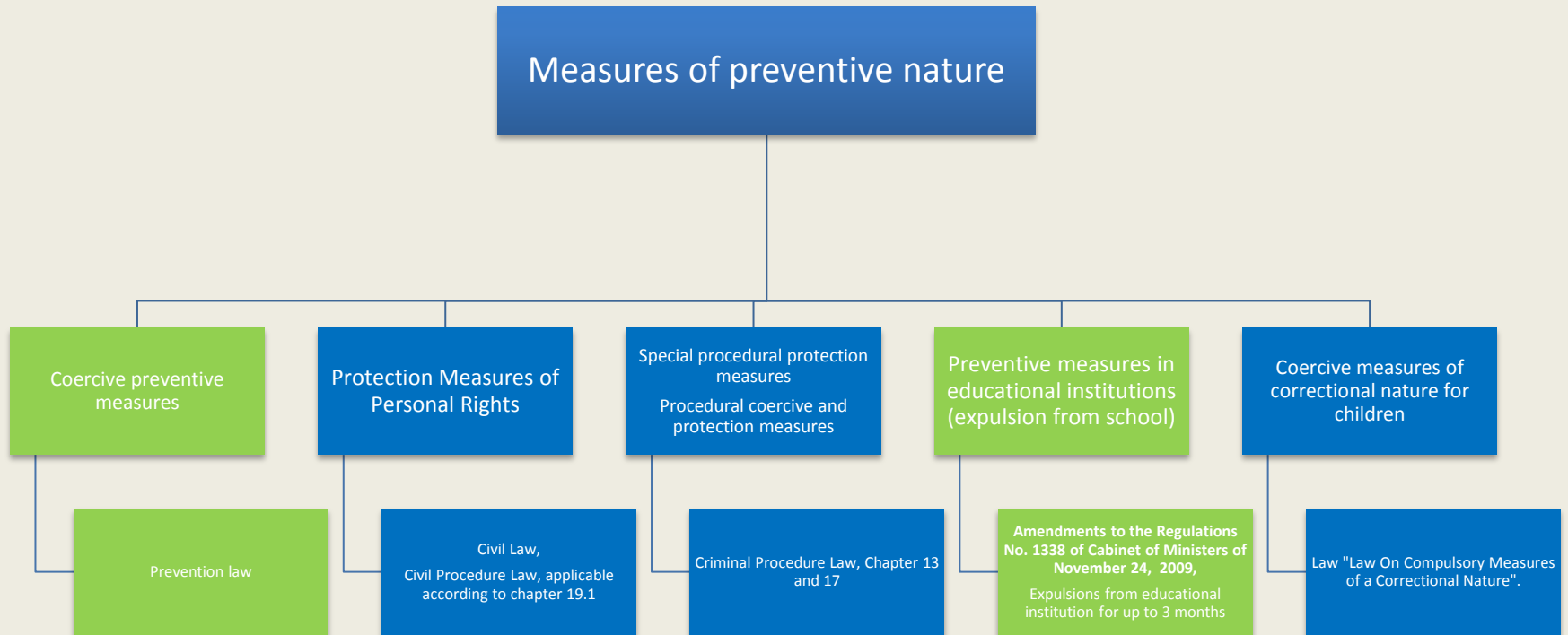
Order in which the information regarding application of PMoPR reaches police and court is shown with red arrows.

***CPM – coercive protective measures; *PTAL – Protection Measures of Personal Rights**



Measures of preventive nature in Latvian legal acts – existing and planned

*blue – existing, but *green – in development



Possible system module of coercive preventive measures in Latvia

Coercive preventive measures (CPM)

CPM for children
and parents

Fast response
CPM

CPM applied in a
general manner

CPM for children
=
Children
protection
orders

CPM for parents
=
Parenting orders

Prohibition to
communicate
and approach =
Fast protection
order

Eviction from
place of
residence or
other place =
Eviction order

Behaviour
control order

Protection order

Prevention control scheme for Latvia according to the research results

